



Geological slip rate estimate for the Calico Fault at Newberry Springs, California: new age constraints from optically stimulated luminescence dating

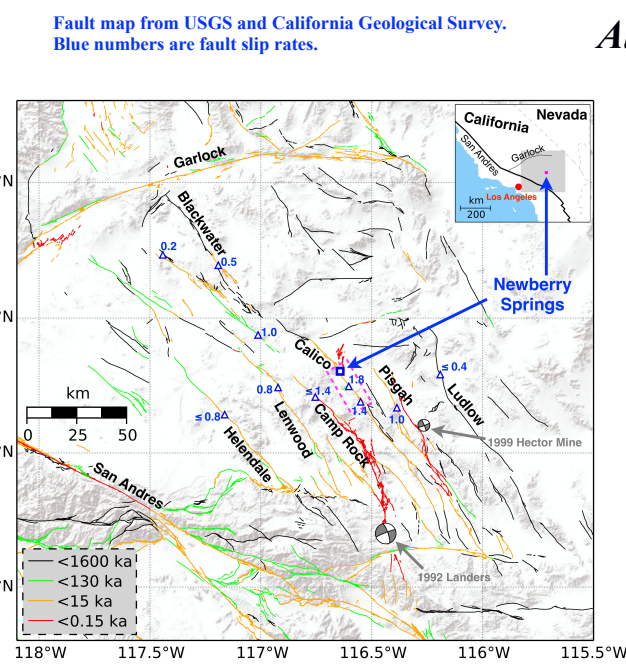
Paula M. Figueiredo¹, Craig Rasmussen², Surui Xie³, Paul H. Wetmore³, Lewis A. Owen¹, Timothy H. Dixon³

1. Department of Geology, University of Cincinnati, Cincinnati, OH, USA 2. Department of Soil, Water and Environmental Science, University of Arizona, Tucson, AZ, USA 3. School of Geosciences, University of South Florida, Tampa, FL, USA

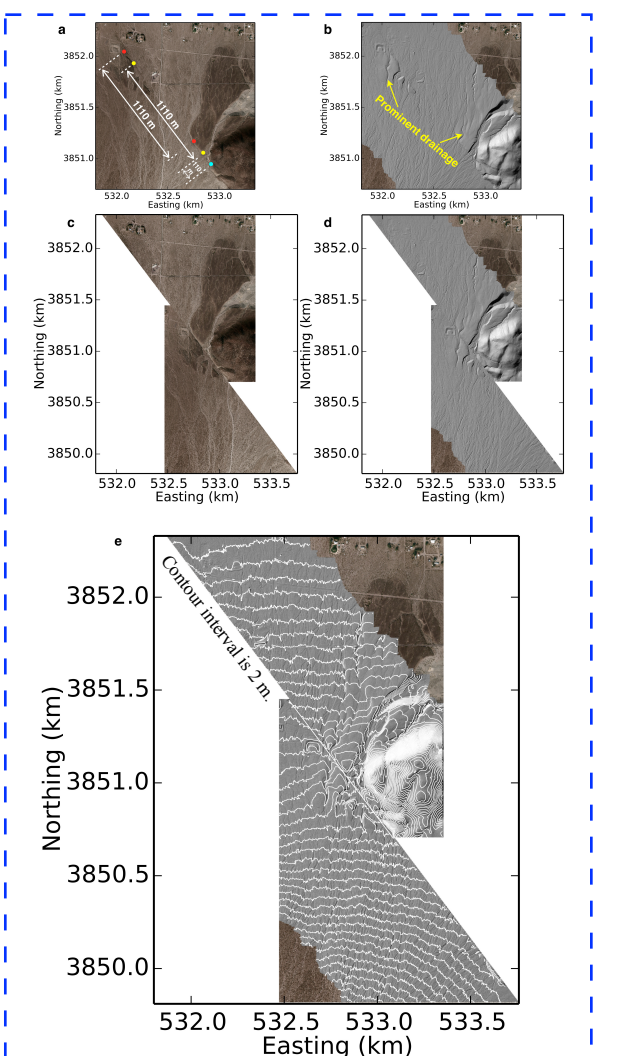
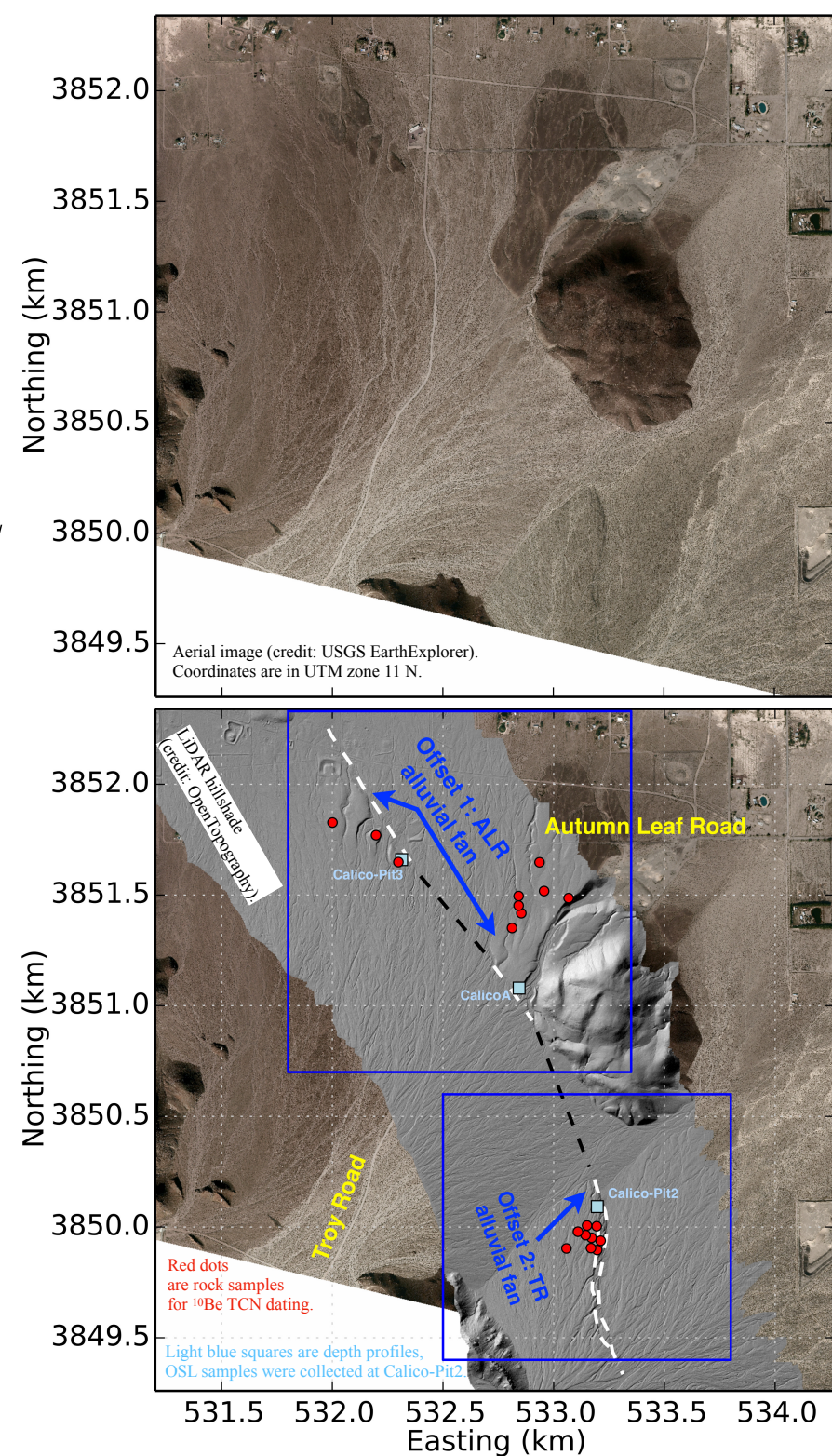
Correspondence: PMF <paula.figueiredo@uc.edu>

Abstract:

- Two alluvial fans offset by the Calico Fault at Newberry Springs California were dated by ¹⁰Be terrestrial cosmogenic nuclide (TCN) methods to estimate slip-rates.
- For the younger fan, TCN results were inconclusive, but soil development and correlation with regional chronostratigraphy suggests a Holocene to latest Pleistocene age for the fan surface.
- Optically stimulated luminescence (OSL) yields ages from 5.8±0.4 (75 cm depth) to 5.0±0.4 ka (33 cm depth), consistent with a slip rate that is higher than previous estimates for the Calico Fault in the Eastern California Shear Zone.

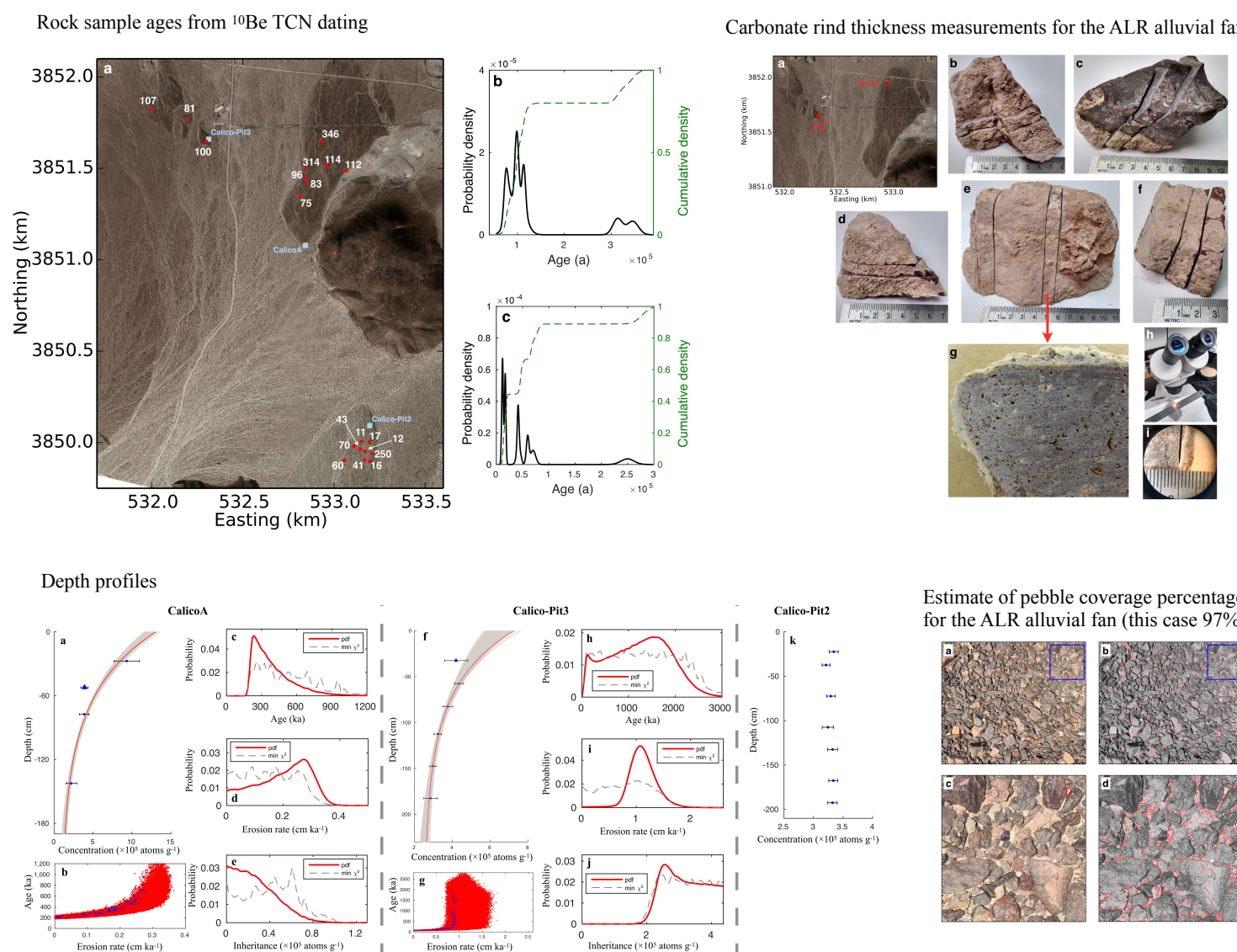
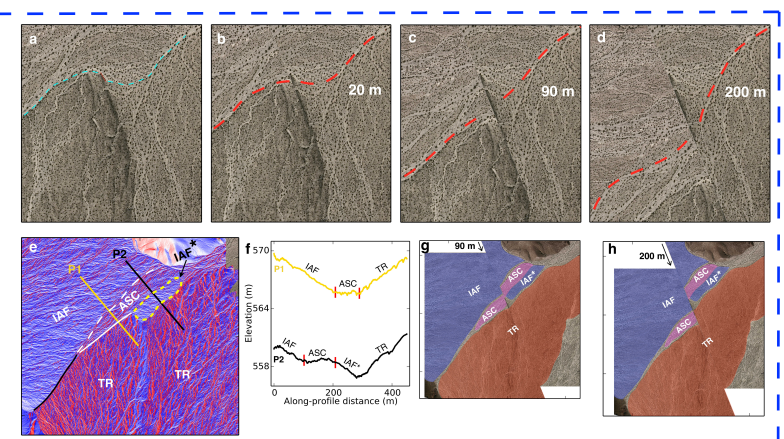


Alluvial fan morphology interpretation and displacements



ALR alluvial fan displacement estimate: 1110±110 m.

TR alluvial fan displacement estimate: <200 m. But how much (200/90/20/...)? Further studies are needed.



¹⁰Be TCN dating, cross correlation with soil chronostratigraphy and slip rate

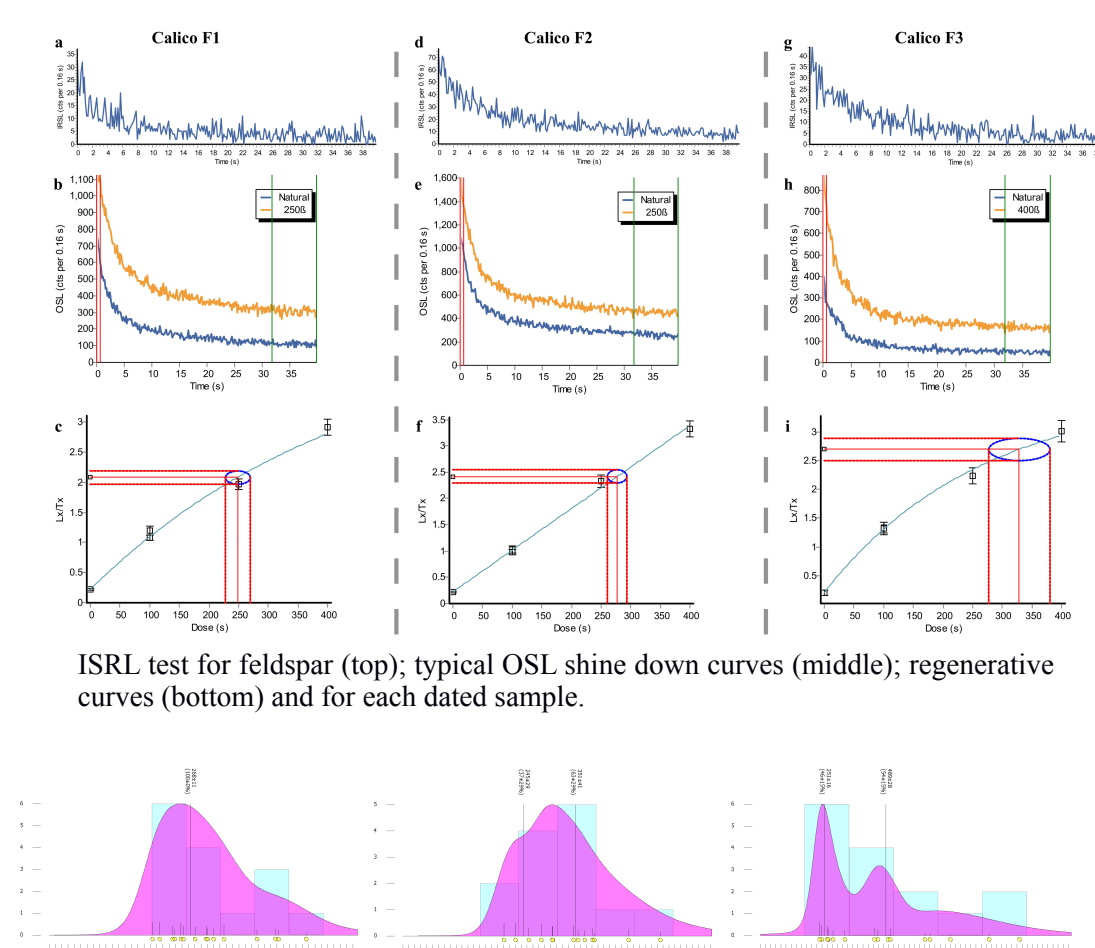
- ALR alluvial fan:** boulders exposure ages yield an oldest age of 346±24 ka. Depth profiles show obvious exponential decrease with depth, but present a broad range of ages. The cross-correlation with the surface pavement (pebble coverage percentage and varnish), carbonate rind thickness and soil chronostratigraphy, support an age of 346±24 ka as the preferred age, resulting in a 3.2±0.4 mm/yr for Calico Fault slip rate.
- TR alluvial fan:** boulders present a wide range of exposure ages (11-250 ka), and inheritance saturation is shown in the depth profile. Based on the four boulders with youngest apparent ages we estimate the weighted mean and two standard deviations, and obtained 14.0±5.8 ka for the age surface. In addition, soil here is poorly developed, with absence of carbonate layer, suggesting a Holocene to late Pleistocene age. Surface pavement is poorly developed as well.

To improve TR alluvial fan age constrain, we collected several OSL samples from TR alluvial fan deposit exposed at Calico-Pit2, to provide the age of deposition, that should be older than the age surface.



Samples collected from Calico-Pit2 for OSL dating.

OSL dating



Equivalent doses for each sample, plotted as histograms (number of aliquots) and probability against equivalent dose (Gy). Samples Calico F1 and F2 present a lower dispersion.

Summary table of OSL dating results from extracted from sediment, sample locations, radioisotopes concentrations, moisture contents, total dose-rates, D_E estimates and optical ages. More details in Xie et al. (2018).

Sample number	Location (°N/°W)	Altitude (m asl)	Depth (cm)	U (ppm)	Th (ppm)	K (%)	Rb (ppm)	Cosmic (Gy/ka)	Dose-rate (Gy/ka)	n _t	n	Dispersion D _E (%)	Average equivalent dose (Gy)	OSL Age (ka)
Calico F1	34.7925/116.6371	596	75	2.5	14.5	2.8	110	0.21±0.02	4.395±0.24	24	15	19	25.46±1.0	5.8±0.4
Calico F2	34.7925/116.6371	596	55	2.1	14.1	3.0	118	0.22±0.02	4.447±0.25	24	13	21	23.27±2.7	5.2±0.7
Calico F3	34.7925/116.6371	596	33	2.3	14.9	3.1	120	0.22±0.02	4.731±0.26	32	15	40	23.84±1.5	5.0±0.4

Conclusions:

- OSL dating yields a Holocene age for the TR alluvial fan, and the fan upper sediments were deposited in a short period of time; this is consistent with the absence of an exponential decrease in Calico-Pit2 TCN depth profile.
- For the younger alluvial fan, such as TR, TCN inheritance can change the apparent ages of ¹⁰Be TCN significantly, and should be justified in estimating the true exposure age. Despite the fact that these quartz characteristics may contribute to underestimating the age, the difference between 5 ka and 14 ka (TCN exposure age estimate) could be partially due to inheritance.
- The cross-correlation of TCN, OSL dating and soil chronology lead us to infer a TR age range from 5±0.4 to 14.0±5.8 ka, consistent with the soil chronology and proposed ages for regional alluvial fan generation by Miller et al. (2010).
- Our data highlight the challenges in determining an exposure age using TCN ¹⁰Be for the TR alluvial fan, and perhaps for other young fans in similar environment. OSL results are less sensitive to these factors (especially inheritance) and may provide a more robust age estimate.
- Although the complexity of the TR alluvial fan prevents us to estimate a robust displacement, the young OSL age suggests a faster slip rate than previous studies.

References

Aitken (1998) An introduction to Optical dating: The Dating of Quaternary Sediments by the Use of Photon-stimulated Luminescence. Oxford University press.
 Hidy et al. (2010) A geologically constrained Monte Carlo approach to modeling exposure ages from profiles of cosmogenic nuclides: An example from Lees Ferry, Arizona. *Geochim. Geophys. Geos.*
 Lawson et al. (2012) Characteristics of quartz and feldspar from southern California, USA. *Radiat. Meas.*
 Miller et al. (2010) Holocene landscape response to seasonality of storms in the Mojave Desert. *Quat. Int.*
 Owen et al. (2007) Numerical dating of a Late Quaternary spit-shoreline complex at the northern end of Silver Lake, Mojave Desert, California. *Quat. Int.*
 Oskin et al. (2007) Slip rate of the Calico Fault: Implications for geologic versus geodetic rate discrepancy in the eastern California shear zone. *J. Geophys. Res.*
 Xie et al. (2018) A new geological slip rate estimate for the Calico Fault, eastern California: Implications for geodetic versus geologic rate estimates in the Eastern California Shear Zone. *Int. Geol. Rev.*

Acknowledgements

This research was supported by USGS-NEHRP grant G16AP00102 and G16AP00103. We acknowledge Amelia Nachbor of the University of South Florida for help with the field work, and Antonio Luna for help with some sample preparation. Sarah Hammer and Kat Rivers at the University of Cincinnati are also thanked for help in sample preparation. We thank OpenTopography for providing LiDAR raster data, and USGS for providing high resolution aerial imagery. This research benefits from comments by Mike Oskin and David Katopody.